

# Walker River Irrigation District

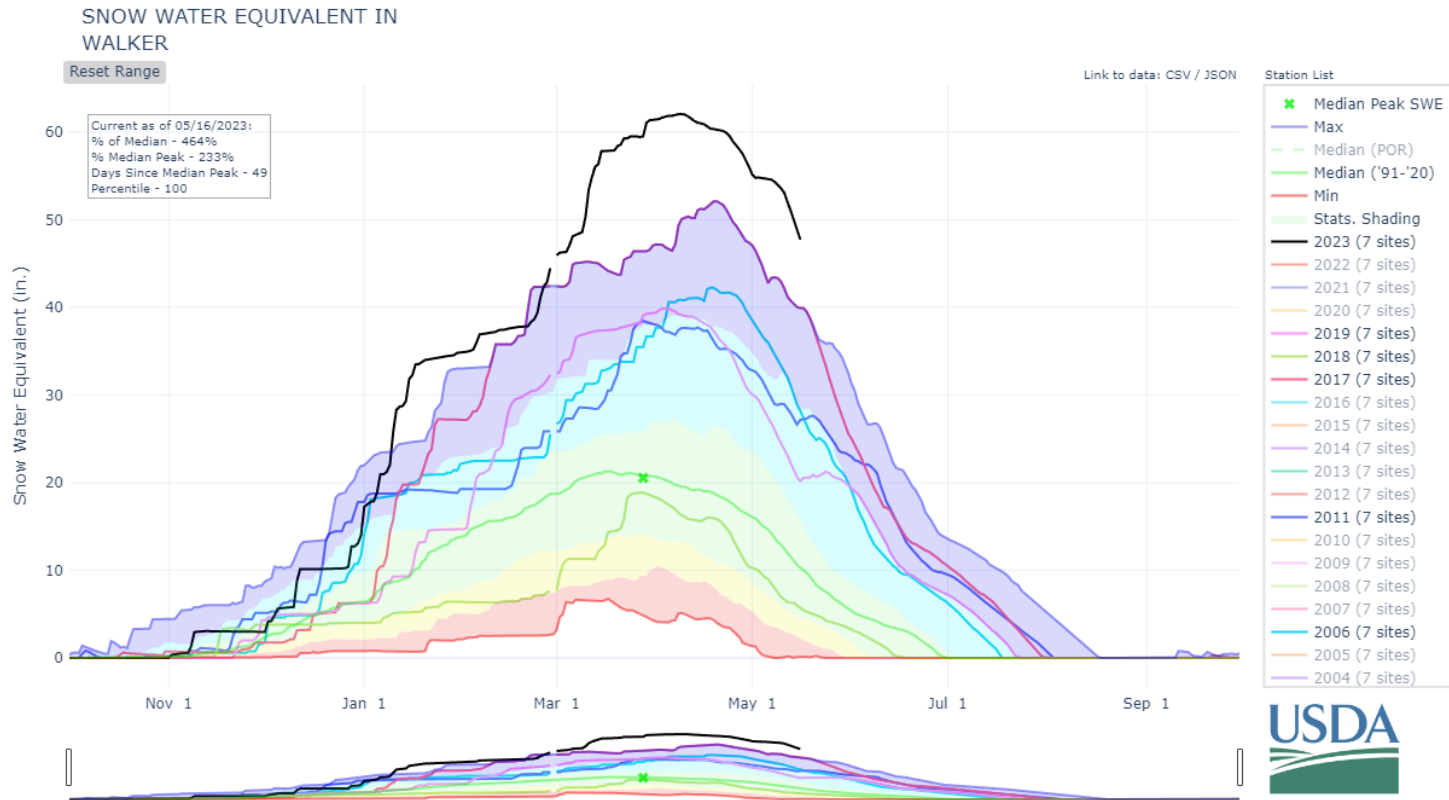
---

WATER YEAR 2023 FLOOD OPERATIONS

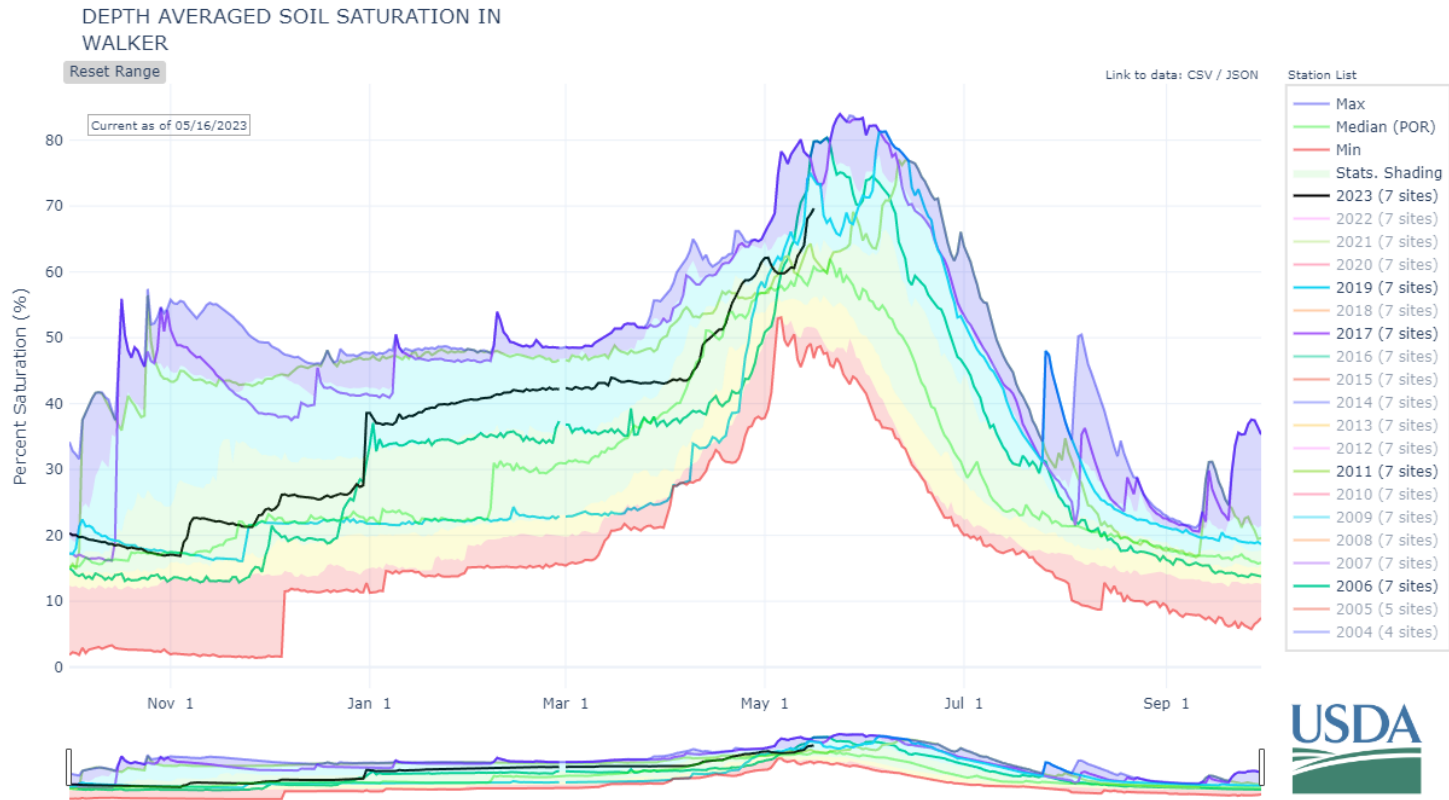


# Current Conditions and Forecasts

# Snow Water Equivalent (SWE)



# Basin Soil Moisture



# April – July Runoff Forecast

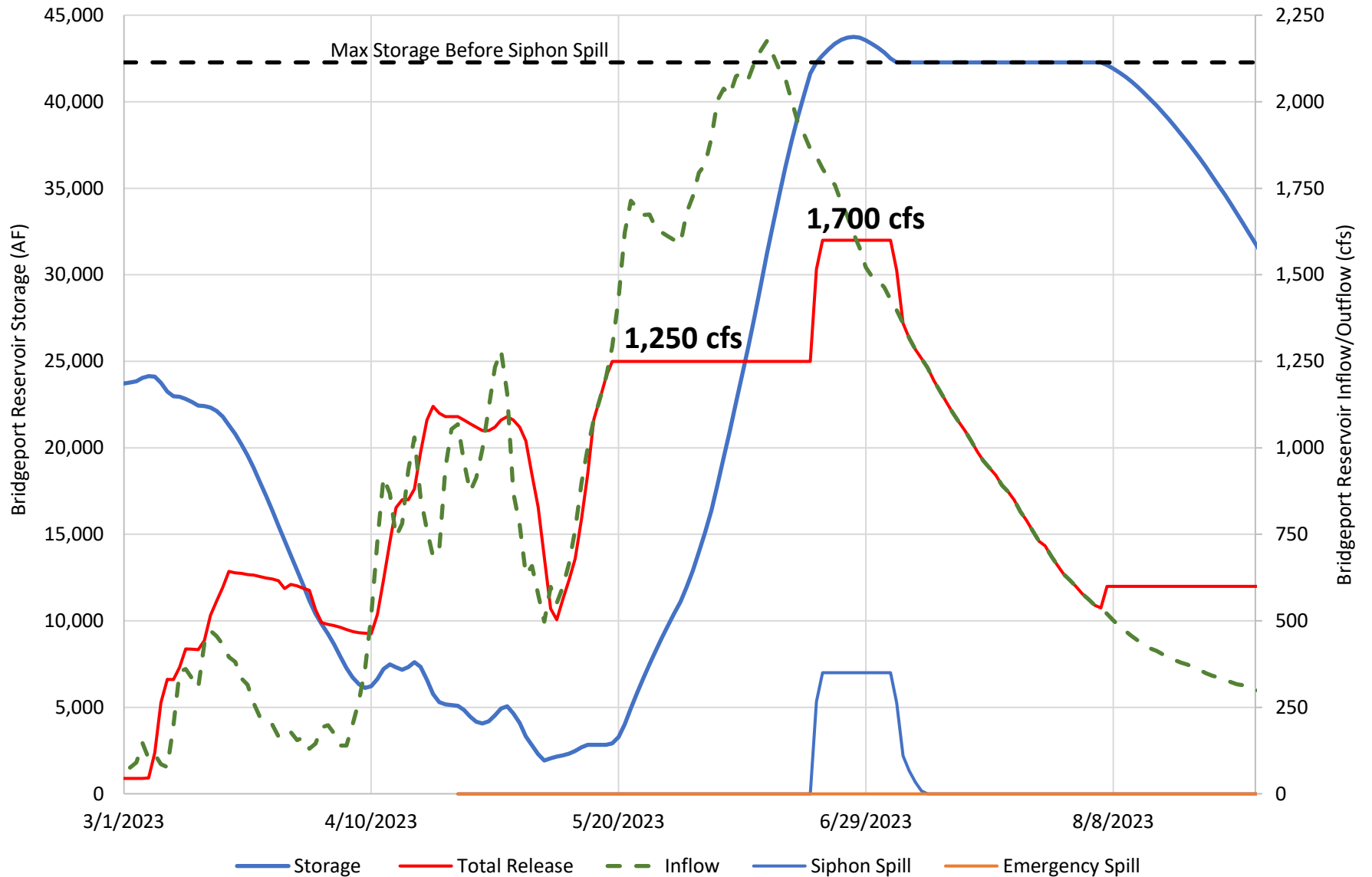
Exceedance	River Forecast Center	2017 Actual	Observed to Date
East Walker River near Bridgeport			
<b>50% (Median)</b>	<b>290 TAF</b>	208 TAF	65 TAF
25%	298 TAF		
10%	311 TAF		
West Walker River below Little Walker near Coleville			
<b>50% (Median)</b>	<b>465 TAF</b>	406 TAF	64 TAF
25%	472 TAF		
10%	483 TAF		

Based on 5/16/23 forecast from California Nevada River Forecast Center

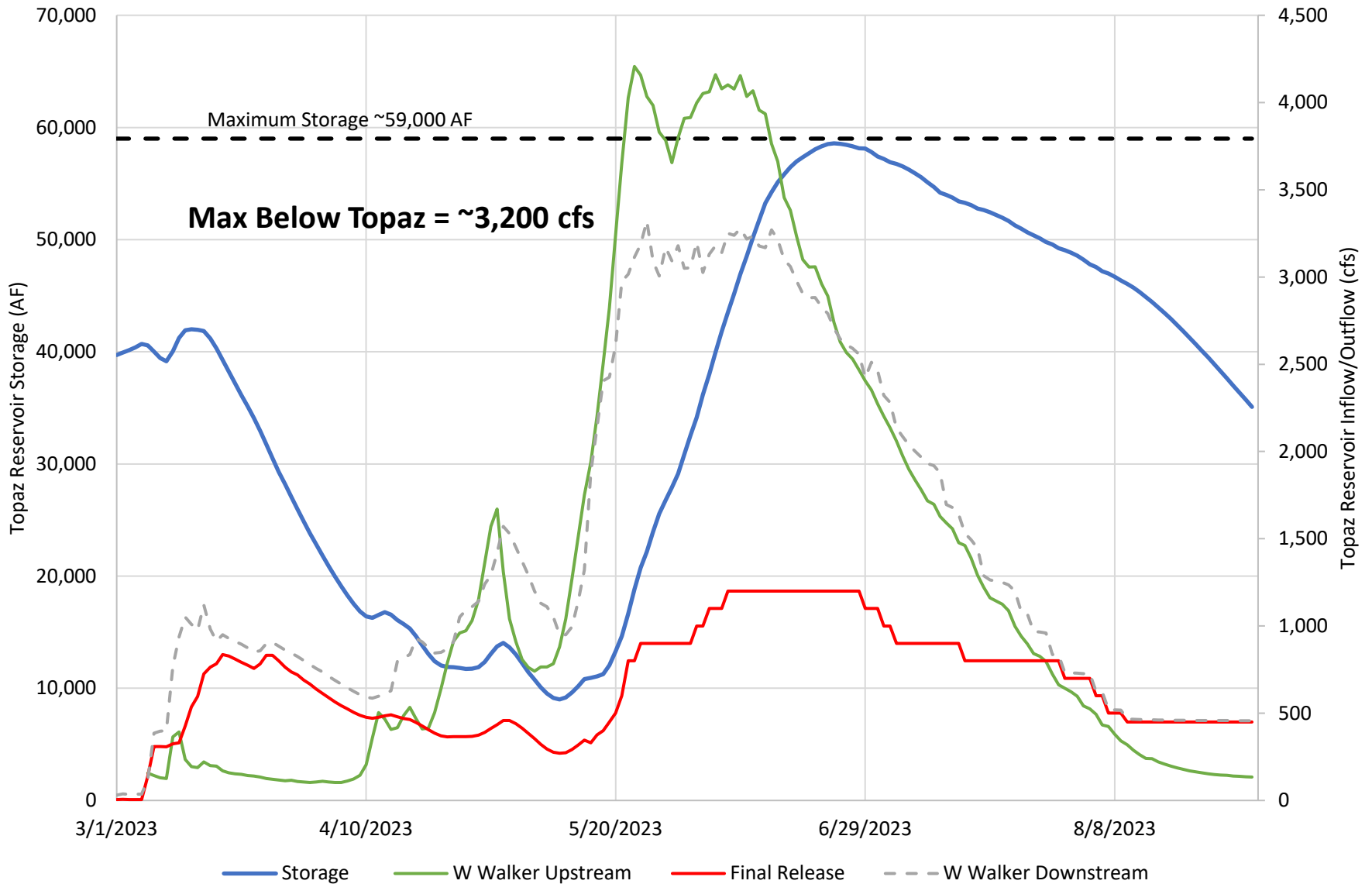


Potential Reservoir Operations – 50% Exceedance

# Bridgeport Reservoir 50% Exceedance Forecast



# Topaz Reservoir 50% Exceedance Forecast

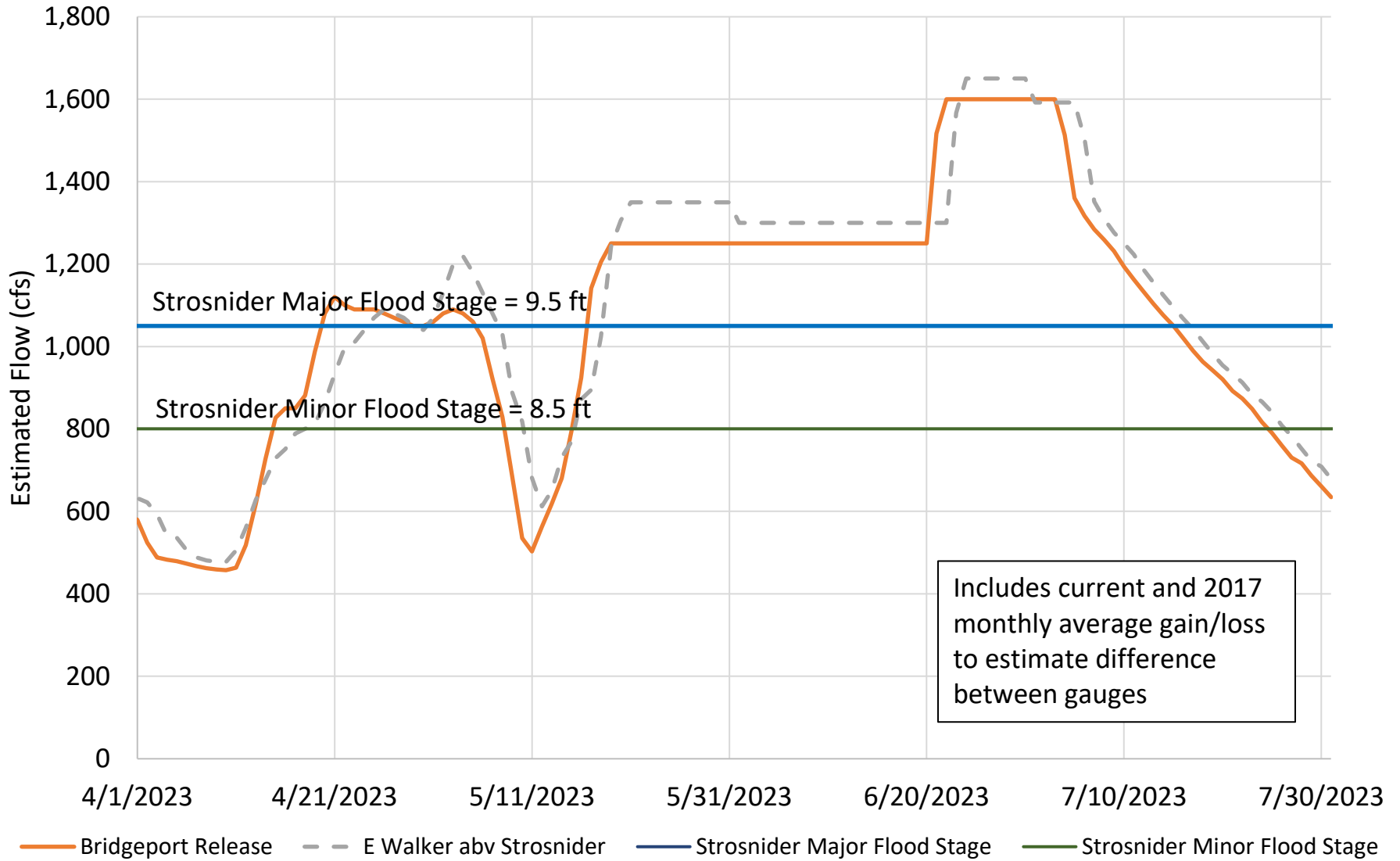




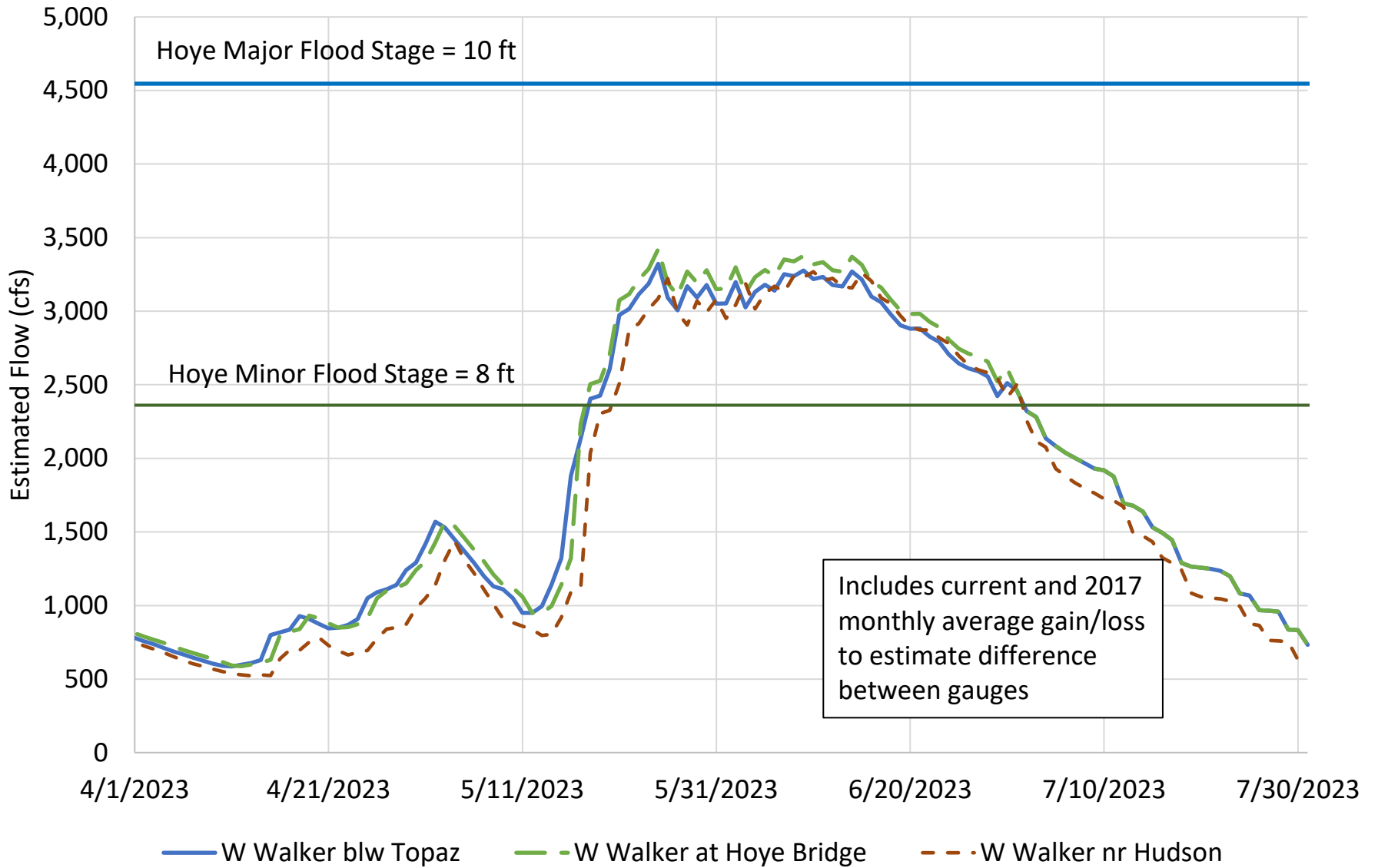


Estimated Downstream Flows – 50% Exceedance

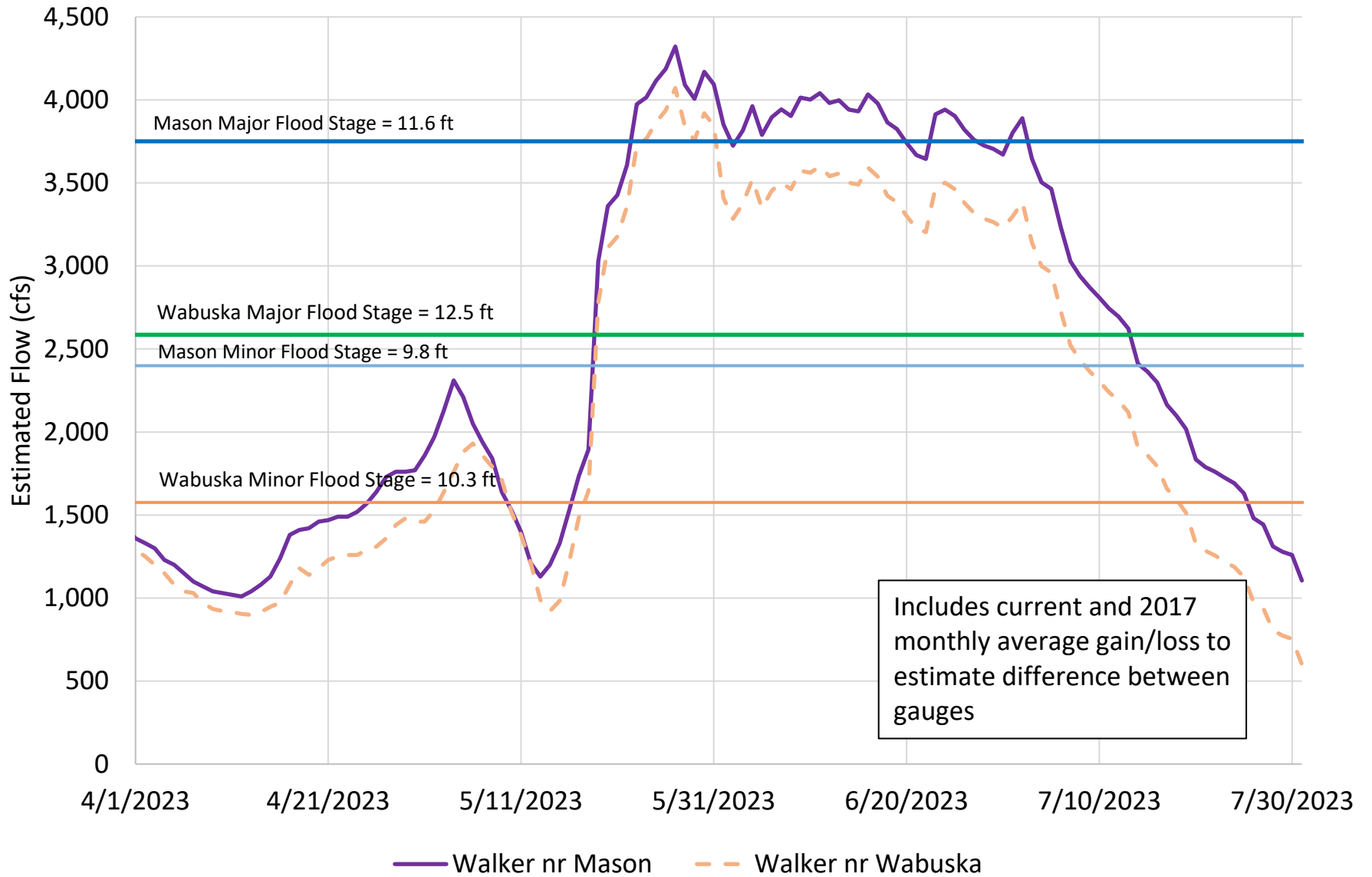
# East Walker River Flows 50% Exceedance Forecast



# West Walker River Flows 50% Exceedance Forecast



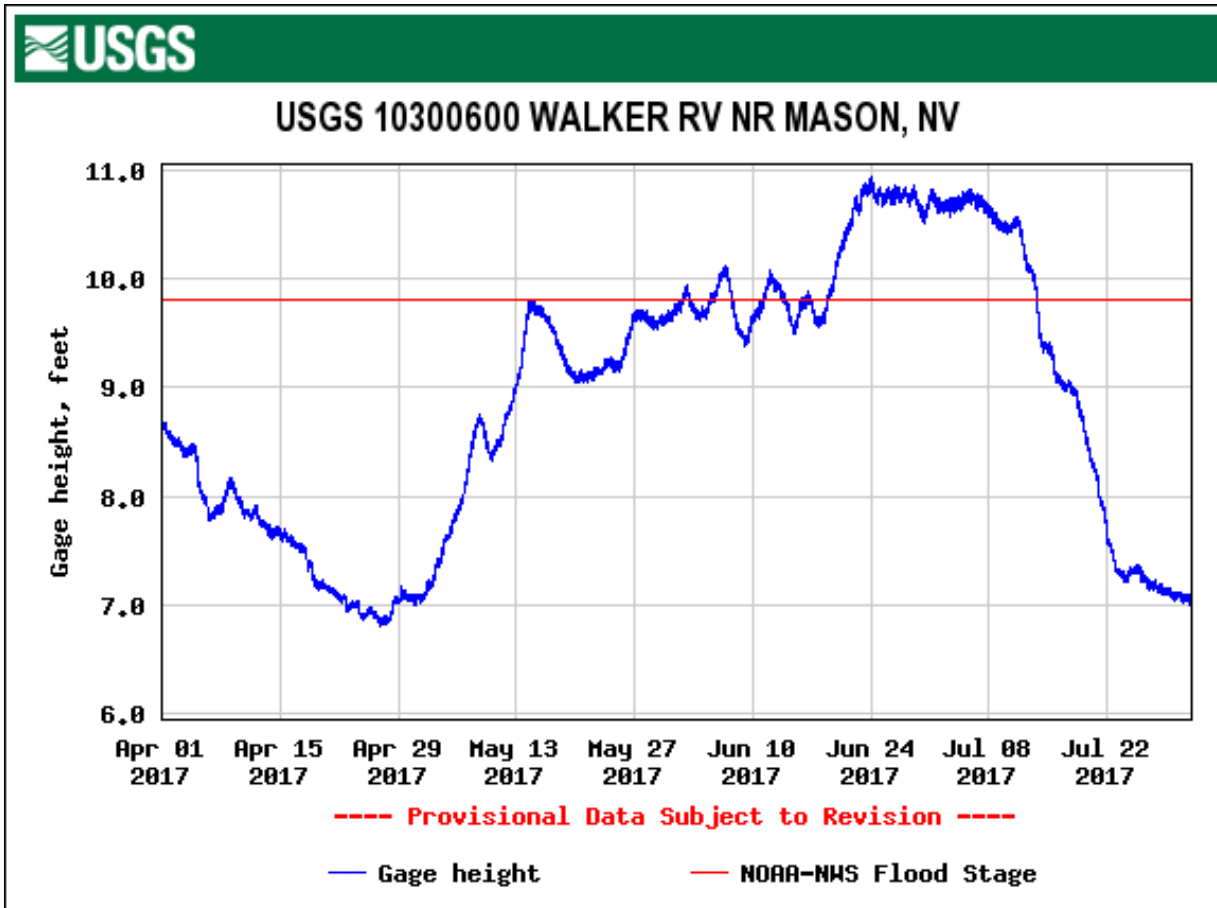
# Main Walker River Flows 50% Exceedance Forecast



# Conclusions

---

# Flows at Mason



April – July flows for East Walker at Bridgeport plus West Walker at Coleville total 614 TAF in 2017

- 2023 combined is 765 TAF @ 50% forecast

Gage height peaked at 10.94 feet, approximately 2,910 cfs

- Estimated max of ~4,200 cfs (~12.2 ft) during 2023 @ 50% forecast



# Conclusion

---

Effective reservoir management will help downstream conditions, but not prevent all flooding

The 50% Exceedance Forecasts conditions result in flows and operations greater than 2017

- Anticipate extended length of flood conditions as compared to 2017 (about 7 weeks of high flows)
- 2017 runoff pattern helped prevent worse conditions