



**United States Department of the Interior
BUREAU OF LAND MANAGEMENT**

Bishop Field Office
351 Pacu Lane Suite 100
Bishop, California 93514
www.blm.gov/ca/bishop



September 19, 2016

To: Bert Bryan
Walker River Irrigation District Manager
410 N. Main Street
Yerington, Nevada 89447

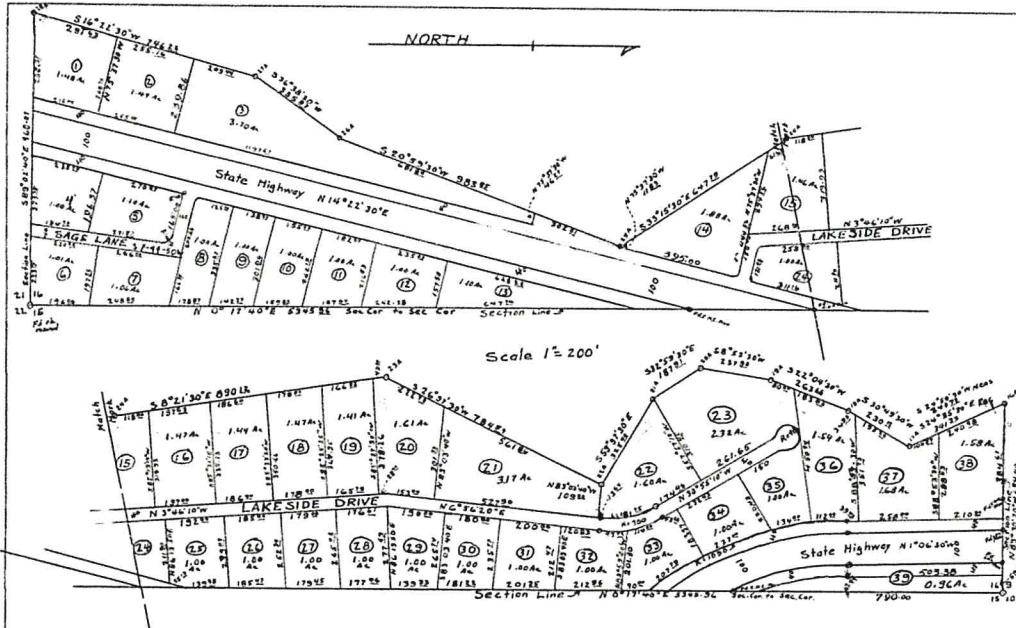
Bert, I wanted to express my appreciation for allowing Joe Huggins to put a combination lock on the gate that is located at the dam at the head of Bridgeport Reservoir on Thursday August 25, 2016 so that we could get GPS coordinates on the ¼ corner between Sections 8 and 9 in T.5N., R.25E. and to search for the section corner common to Sections 8, 9, 16, and 17 set by A. W. Von Schmidt in 1857. We found a very old fence that bears north and east of which the fence corner fits the stakeout position for the section corner very well which also helps prove out the section corner common to Sections 9, 10, 15, and 16 remonumented by J.H. Creed in 1956, Registered Engineer, California license # 5521.

As I mentioned to you over the phone, BLM plans to do fuels mitigation work on public land in an effort to break up the fuel continuity and arrangement so that fire suppression personnel have a better chance of holding fire to public land and to lessen the chances of having it carry over onto private property. Our survey will define the public/private boundary so that the fuels mitigation work can take place.

I would like to get permission to work with you and Joe Huggins so that we can periodically get across the dam and be able to locate and monument corners as well as mark the public/private boundary. I anticipate at least one more time in 2016 to be over on that side of the reservoir. I plan on monumenting the old fence corner that fits the stakeout location for the section corner common to Sections 8, 9, 16, and 17. I've attached 3 maps with this request. Thanks for your help! It is very much appreciated!

Steve Grimaldi
BLM Cadastral Land Surveyor
sgrimaldi@blm.gov
760-872-5038

Attachments:
Bridgeport_WUI_Cadastral_Request (1)
Bridgeport Reservoir Topo Map
J.H. Creed survey



I, John Gregory, being first duly sworn, depose and say that this property, being subdivided as BRIDGEPORT LAKE RESORT, hereon shown, is the property of Sunny-Cal Ranch Corp., holding all record title and interest in the said property, and under whose authority the land is subdivided and the final maps are prepared for recordation

John L. Gregory
Sunny-Cal Ranch Corp.
Subscribed and sworn to before me
this 14th day of MAY, 1956

Henry James Shuler
Notary Public in and for Mono
County, State of California
My Commission expires June 15, 1960.

This subdivision is hereby approved by
the Mono County Health Department

John L. Gregory
Mono County Health Officer
By *Thomas W. Cornwell*

I hereby certify that this map of the
BRIDGEPORT LAKE RESORT SUBDIVISION
was approved by the Mono County Board
of Supervisors on the 22nd day of August
1956

Geo. C. Ebbey, Jr.
Clerk of the Board
By *Thomas W. Cornwell*
Secretary

I, J.H. Creed, certify that I am a Registered
Civil Engineer in the State of California, and that
this map is a true record of a survey made
by me in April 1956, that all monuments shown
are in the location indicated, are of the material and
dimensions shown, and are sufficient to enable the
survey to be retraced. All main angle points on the
exterior boundaries and lot corners are marked by
iron pins. Others are 2 1/2" x 4's
J. H. Creed
R.E.5521

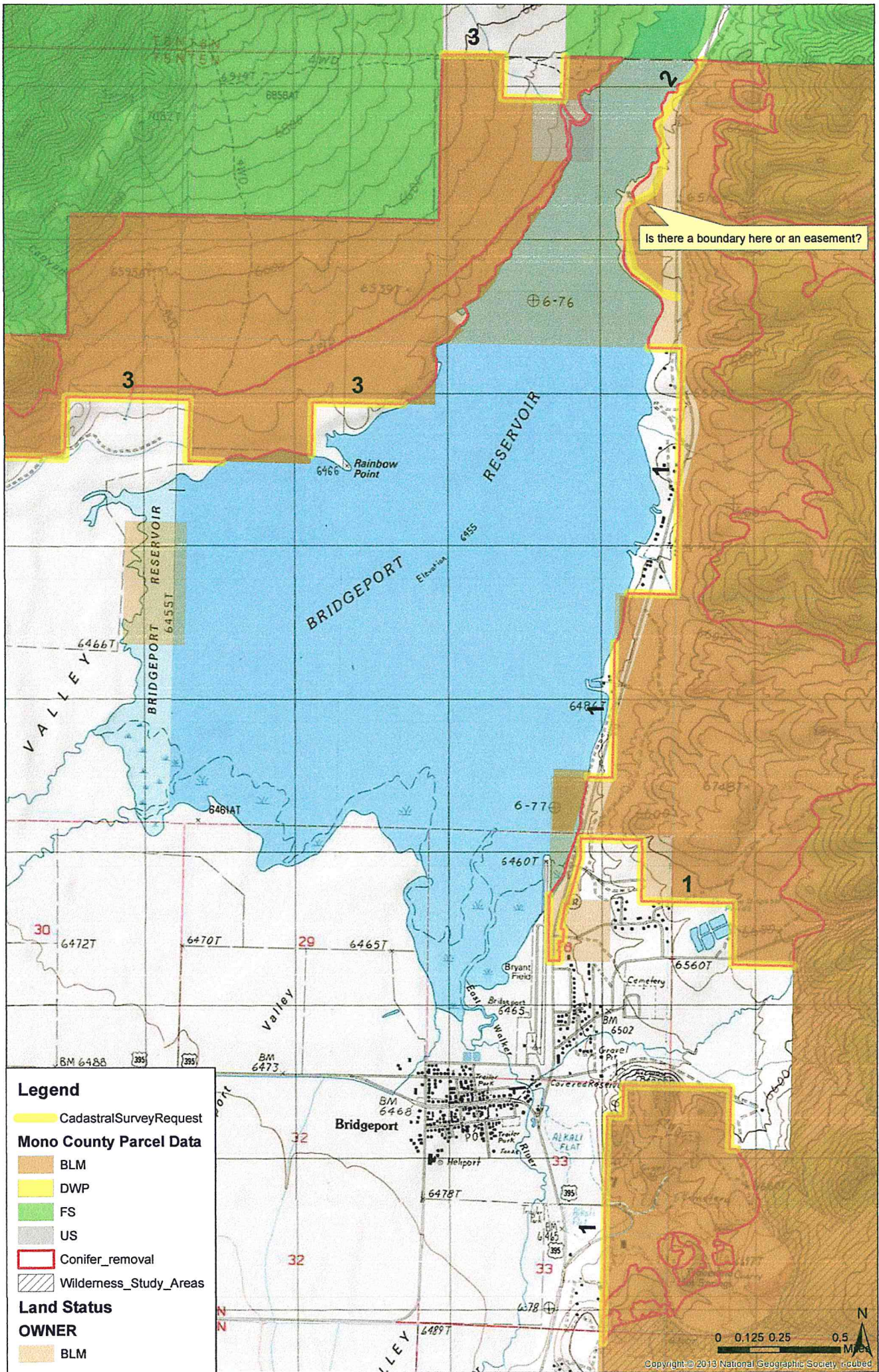
NOTE: LOCAL ORDINANCES CONTROL ALL SEWAGE DISPOSAL
SYSTEMS AND PERMITS TO CONSTRUCT SUCH ARE REQUIRED
BEFORE ANY BUILDING BEGINS. THE LAND USE OF THESE
LOTS IN THIS SUBDIVISION WILL VARY. ALL BUYERS ARE
CAUTIONED TO CONTACT THE MONO COUNTY HEALTH
DEPARTMENT BEFORE PURCHASING

Note: Only one dwelling shall
be permitted on each lot as
shown on this map.

Thomas W. Cornwell
George W. Cornwell

RECORD OF SURVEY MAP
BRIDGEPORT LAKE RESORT SUBDIVISION

Being a subdivision of the portion of section 16
T 5N R 25E lying between the east section line
and a line lying 25 feet easterly of the 6463 foot
contour meander line of the Bridgeport Reservoir
as shown in the records of the Walker River
Irrigation District.
The bearings have been equated to Calif. Highway
Commission Bearings.

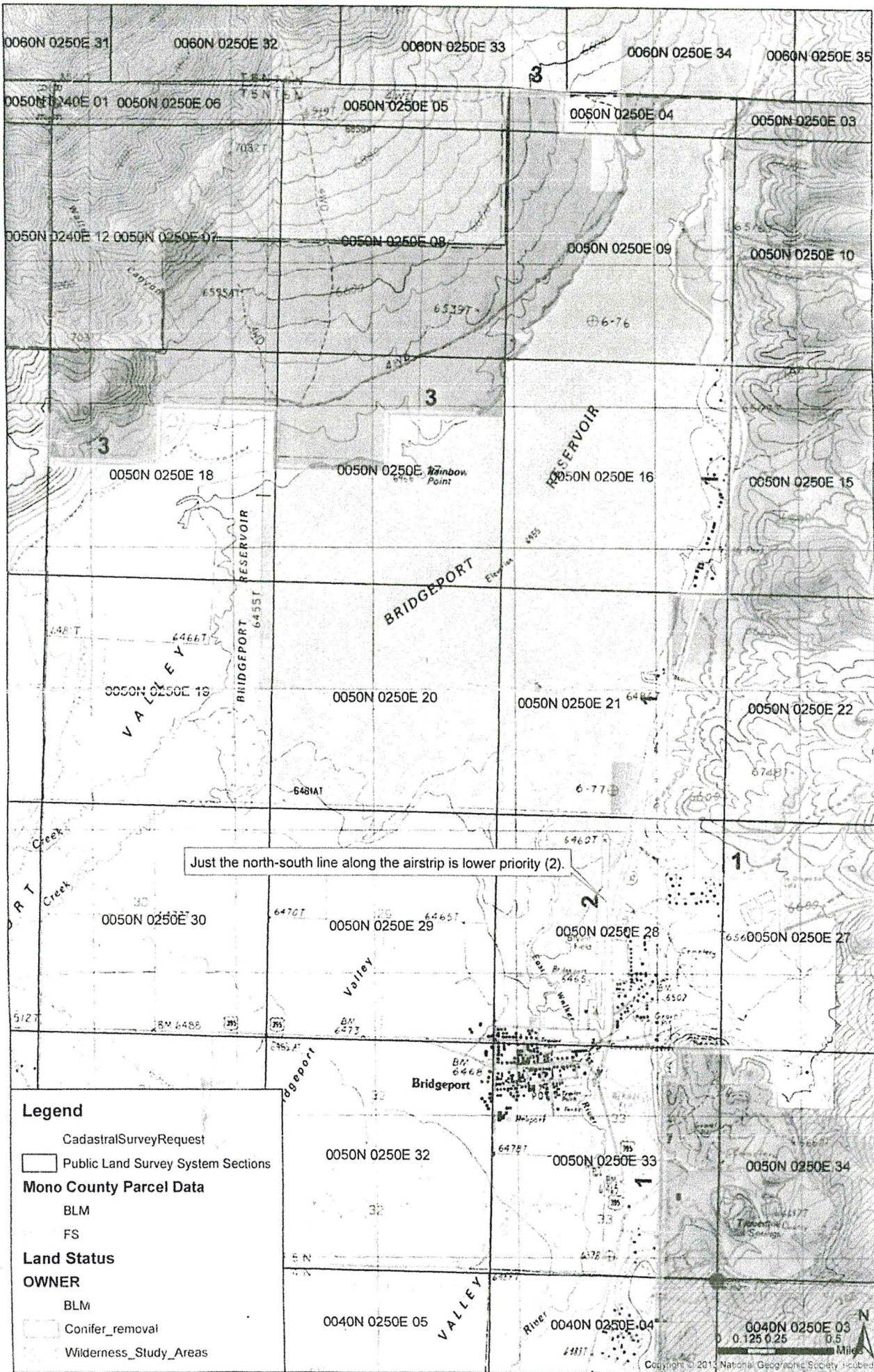


Is there a boundary here or an easement?

Legend

- CadastralSurveyRequest
- Mono County Parcel Data**
- BLM
- DWP
- FS
- US
- Conifer_removal
- Wilderness_Study_Areas
- Land Status**
- OWNER**
- BLM

0 0.125 0.25 0.5 Miles



Just the north-south line along the airstrip is lower priority (2).

Legend

- CadastralSurveyRequest
- Public Land Survey System Sections
- Mono County Parcel Data**
- BLM
- FS
- Land Status**
- OWNER**
- BLM
- Conifer_removal
- Wilderness_Study_Areas

