

East Walker River – Fisheries Habitat Enhancement Project



1

<p>Partnership</p> <ul style="list-style-type: none"> • NDOW • Nevada State Parks • Walker Basin Conservancy (Consulted Party) 	
<p>Project Funders</p> <ul style="list-style-type: none"> • Sagebrush Chapter TU • NDOW Heritage Funds • Patagonia • Private Donations – TU 	<p><i>Location: 5.4 miles east of Highway 338 via NF 028 along a reach of the East Walker River known as the "Elbow".</i></p>
<p>Project Timeline</p> <ul style="list-style-type: none"> • Design Development/Agency Coordination: 2020-2021 • Project Permitting: Summer 2021 - Current (archeological surveys, wetland delineation, etc.) • Floodplain Biogenic Habitat Features Construction: Spring 2022 • Instream Rock Feature Construction: PLANNED Spring/Summer 2022 	<p>2</p>

2

East Walker River – Fisheries Habitat Enhancement Project


Project Benefits

Hydrological/Water Quality

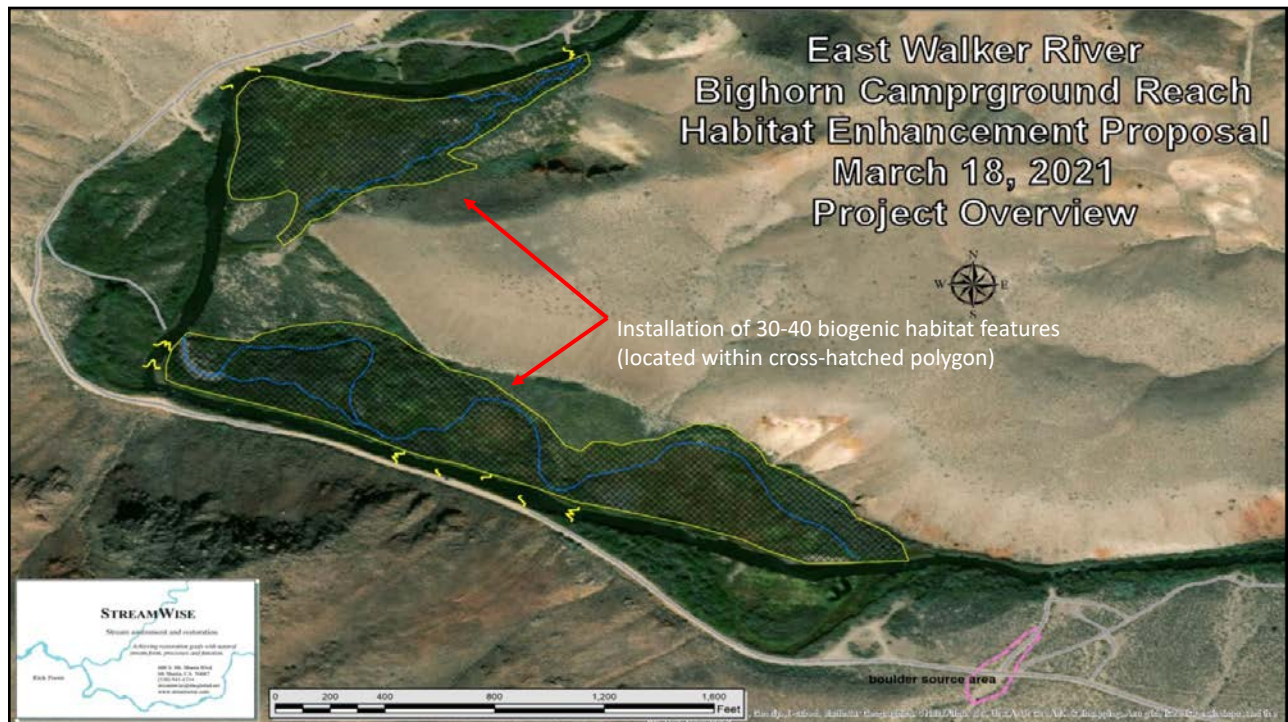
- Increase bank stabilization to decrease streambank erosion
- Decrease sedimentation
- Protect adjacent road from erosive tendencies and prevent road flooding

Fish and Other Aquatic Species


- Increase pool habitat for fish. Added angler opportunity, also provides holding areas and refugia for both adult and juvenile trout.
- Create more diverse instream habitat to support a variety of aquatic invertebrates and fish life stages
- Create higher quality fish spawning habitat



3



4



Biogenic Habitat Features - Floodplain


Hydrologic/Water Quality

- Features are only active during overbanking flood flows (extremely high CFS)
- Can help to increase late-season (or next irrigation season) base flow following flood events
- Capture sediment and reduce bank erosion during flooding

Fish/Wildlife

- Can help improve riparian habitat for wildlife, such as waterfowl, bighorn sheep, deer and sage grouse
- Improve fish refugia, creates escape habitat during flooding

Floodplain features
Installed March 2022



5

Proposed Instream Work

- 5 J-Hooks
- 4 W-Weirs
- 1 Cross-vane
- Various Habitat boulders

What Do These Structures Do:

- Increase pool habitat
- Increase fish spawning habitat
- Move water (energy) away from unstable banks and toward center stream

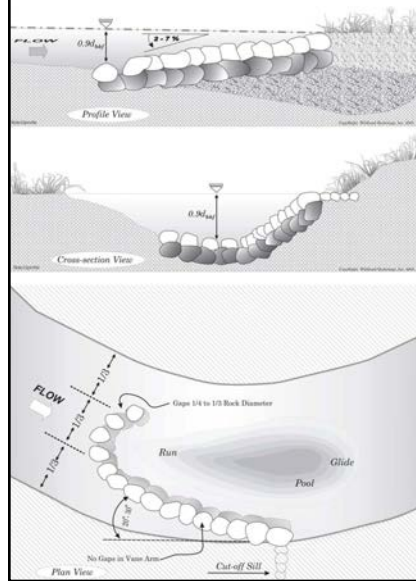
What do These Structures NOT Do:

- Impound water
- Divert water



6

J-Hook Features



Truckee River

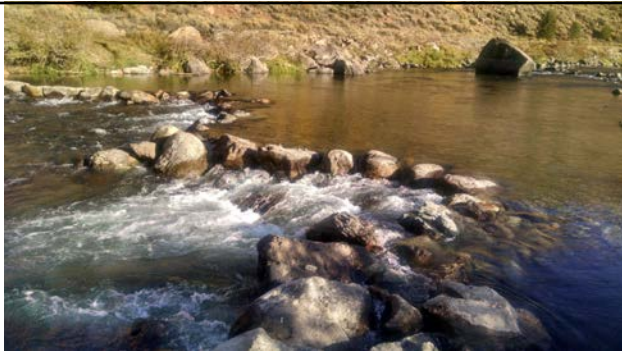
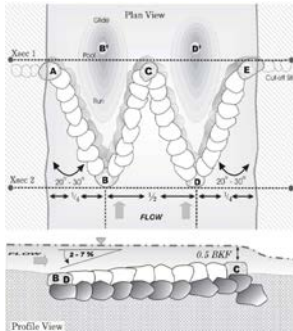


West Walker River
Cottonwood Ranch



7

W-Weir Features



Truckee River

West
Walker
River

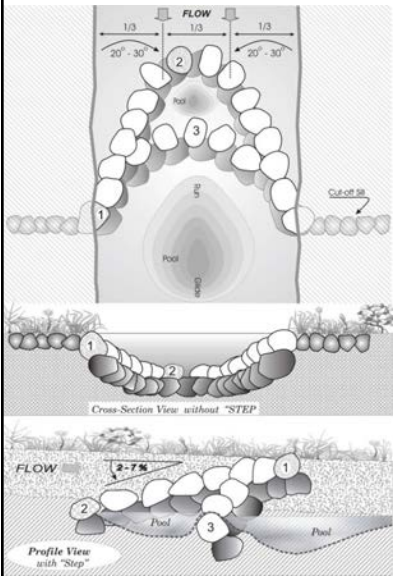


Putah
Creek



8

Cross-vane Features



Putah Creek



Pit River
Post 4 years
(features buried)